

Future Energy Institute

Excavation Work Authorization Form

Excavation Site Location

Parcel ID: _____

Proposed Use: "New Silverdale" Community Library

Notes:

Excavation is for the library to be located in the center of the "New Silverdale" Civic Center

ATTENTION

All work crews must complete and submit this form for approval by the project foreman prior to beginning work.

When submitting, this form must be accompanied by a completed and correct Community Planning Form (Figures 1 through 3).

Upon approval by the project foreman, the work crew will be provided detailed directions to, and a site plan for the Excavation site.

Authorized By: _____

(Project Foreman)

Future Energy Institute

Excavation Work Authorization Form

Excavation Site Location

Parcel ID: T25N-R1E-30

Proposed Use: Power Distribution Station

Notes:

Excavation is for a power distribution station within borders of the planned "New Silverdale" community, and will have a combined TOTAL OUTPUT of 14 MW



ATTENTION

All work crews must complete and submit this form for approval by the project foreman prior to beginning work.

When submitting, this form must be accompanied by a completed and correct Community Planning Form (Figures 1 through 3).

Upon approval by the project foreman, the work crew will be provided detailed directions to, and a site plan for the Excavation site.

Authorized By: _____

(Project Foreman)

Planning Form: 8x8, Part 1

Figure 1: Districting

Planning Form: 8x8, Part 2

Figure 2: Power Distribution

Planning Form: 8x8, Part 3

Figure 3: Zoning

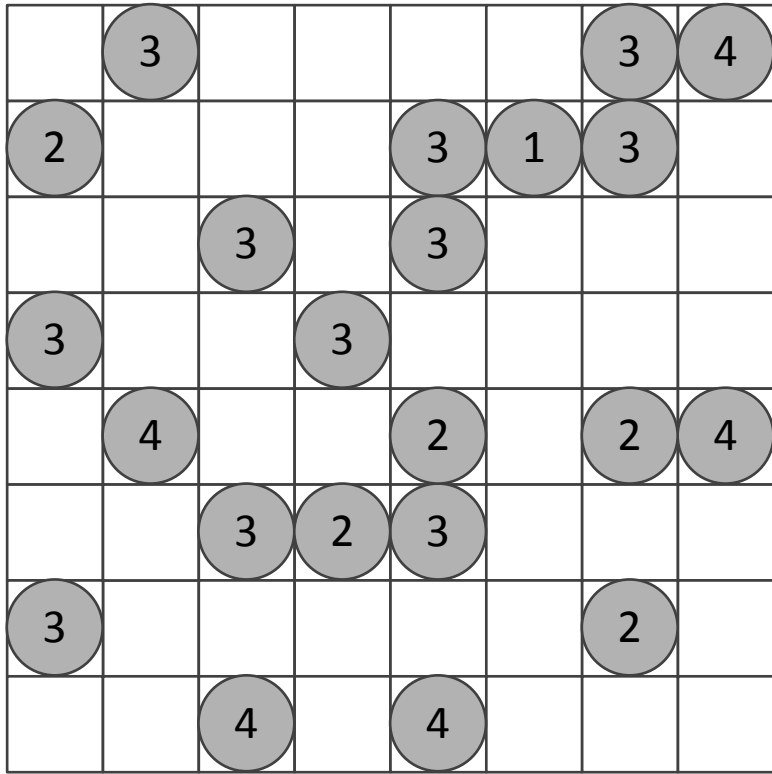
Power Distribution Stations

Station Outputs (Includes Local Distribution) in MW.

Primary	Secondary	Tertiary
36	27	1
2	NONE	NONE
2	NONE	NONE
2	2	2
9	2	NONE
11	2	NONE
3	NONE	NONE
3	NONE	NONE
3	3	3
4	3	NONE
14	7	3
8	3	NONE
22	11	3
13	3	NONE
16	3	NONE
19	3	NONE
24	3	NONE
4	NONE	NONE
4	NONE	NONE
4	4	NONE
6	4	NONE
10	4	NONE

Job
Kitsap County planned community development initiative: "New Silverdale"

Description
[Partial Shipment] Power Distribution Station Components:
Transformer - Outputs: Primary 8, Secondary 3 (Wired for Residential Distribution) x1
Transformer – Outputs: Primary 6, Secondary 4 (Wired for Commercial Distribution) x1
Transformer - Outputs: Primary 10, Secondary 4 (Wired for Residential Distribution) x1
Transformer - Outputs: Primary 19, Secondary 3 (Wired for Commercial Distribution) x1



 Commercial

 Residential

 Industrial

 Civic Center

